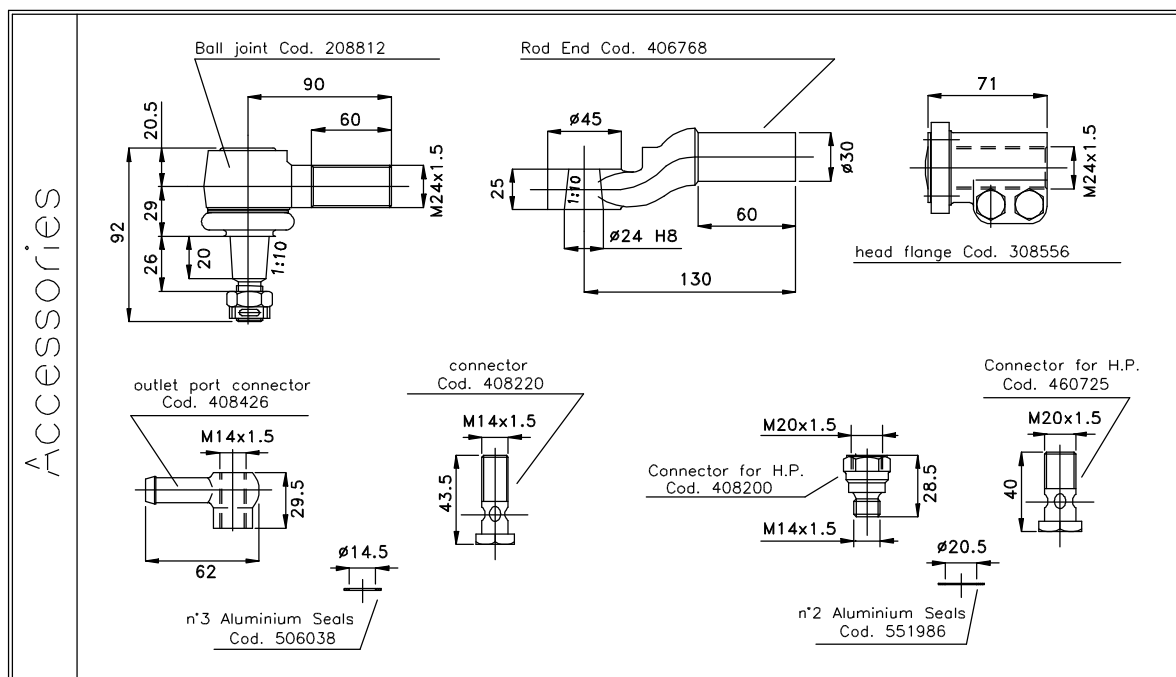
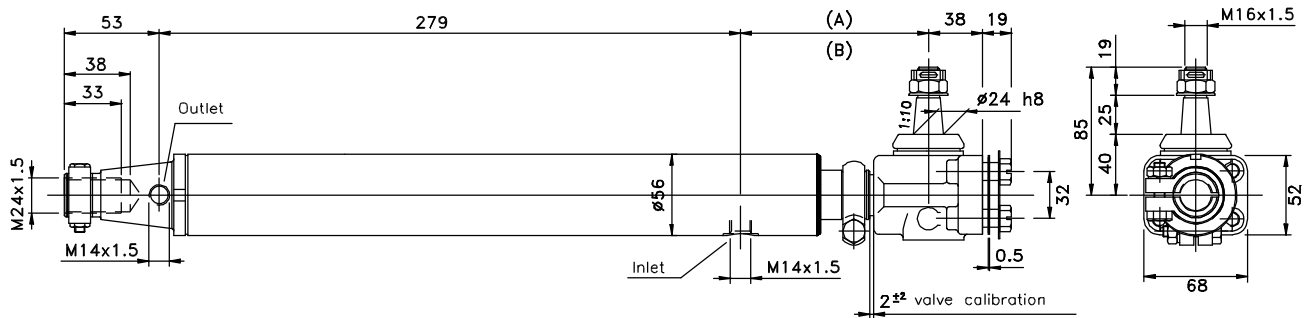




# RAM STEERING

- Mod. T.35/20 -

R.C.D. s.r.l.  
Via Parini, 9  
40069 Zola Predosa  
Bologna - Italia  
Tel. (+39) 0516186111  
Fax (+39) 0516186188  
E-Mail: rcd@rcd.it



## TECHNICAL DATA

RCD <sup>®</sup> CODE	TYPE	Max Stroke (mm.)	(A) Closed (mm.)	(B) Extended (mm.)	Active Surface both direction (cm. <sup>2</sup> )	Force at 100 bar	Note
210679	T35/20-SR	200	105	305	8.5	Kg. 850	Without Reaction
209645	T35/20-R	200	105	305	8.5	Kg. 850	With Reaction

### Suggestions for assembling.

The application of the RAM STEERING shall be completed by using the correct pump, or by installing a mass flow control device in the hydraulic circuit. Pipelines, connectors and other mechanicals items are also required.

The components illustrated in "ACCESSORIES" allows the cylinder to be READY-TO-USE.

**NOTE:** The reaction device guarantee a proportional answer, opposite to the steering input: this force is proportional to the instantly working pressure inside the cylinder.  
This system is made to increase the drive feeling.

RCD s.r.l. Warning: technical data are not complete and they may change, please contact RCD for the drawings.